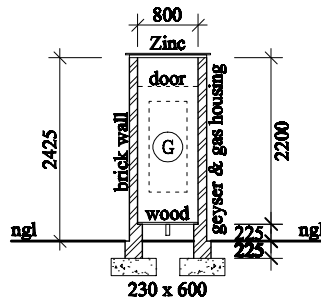
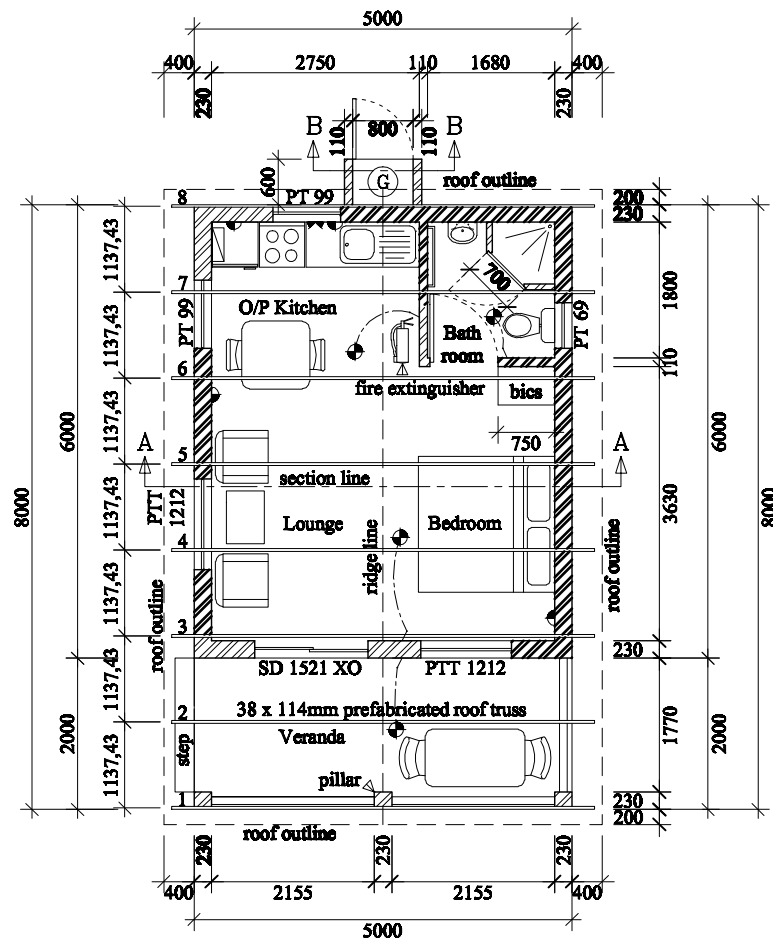


SECTION A - A  
1:100

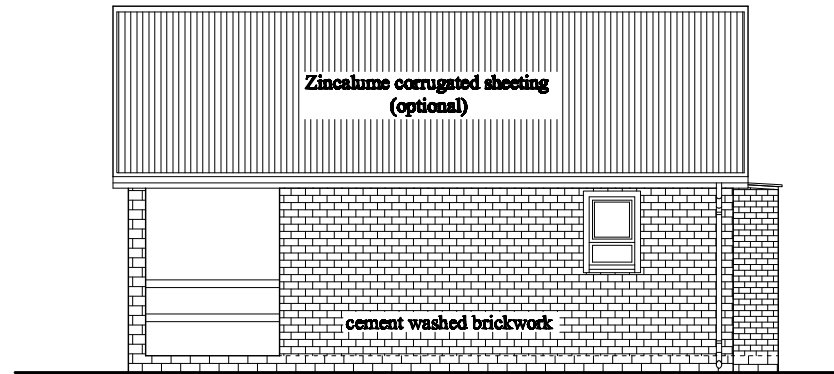
ELECTRICAL LEGEND	
	CEILING LIGHT
	15 AMP PLUG
	STOVE CONNECT
	LIGHT SWITCH
	GEYSER
	DISTRIB BOARD



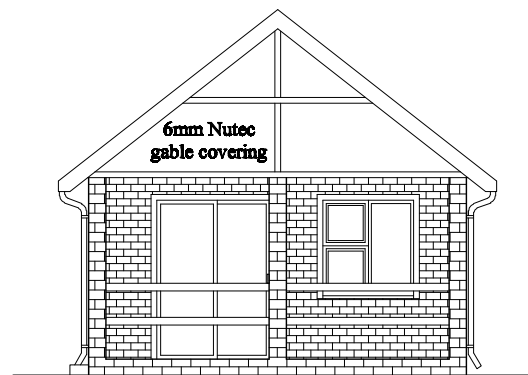
SECTION B - B  
1:100



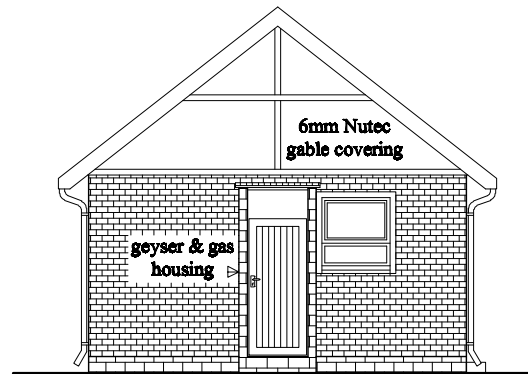
FLOOR PLAN & ROOF TRUSSES  
1:100



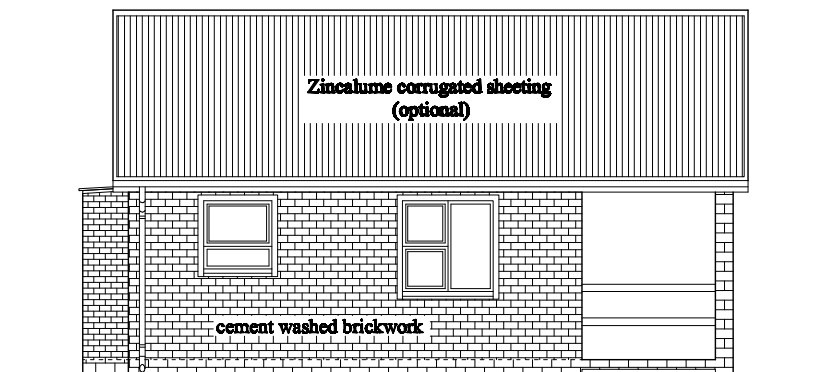
LHS ELEVATION  
1:100



FRONT ELEVATION  
1:100



REAR ELEVATION  
1:100



RHS ELEVATION  
1:100

#### BUSH & BEACH BUNGALOW - DESIGN CONCEPT - BRICK & MORTAR

- **SITE**  
Site Plan, contours, soil tests, engineering specifications etc. applicable only once site is determined; Incoming water & electrical supply and outgoing sewerage is dependent on availability at site.
- **FOUNDATIONS**  
230 x 600mm strip foundations with re-inforced Y-bar to engineers' specifications;
- **FLOOR SLAB** (Floor Area: 5m x 8m = 40m²)  
75mm concrete slab @ 15Mpa on 250 micron DPC membrane on well-compacted filling in layers of 150mm max.
- **WALLS** - 230mm  
Clay stock bricks re-inforced with 150mm galvanised brickforce every 4 courses; double 110 x 75mm lintels mounted on walls above all doors and windows with galvanised hoop-iron and beam fill; brickforce every course above windows and doors; Geyser and gas bottle compartment in centre of back wall: 2 x 110mm walls 800mm apart and 600mm wide covered with Zincalume corrugated roof sheeting at 3° and fitted with treated access door;
- **TRUSSES**  
Pre-manufactured Roof Trusses (Pennypinchers) - 8 evenly spaced trusses at approx. 1137mm c/c at 38°; secure all trusses at both ends to wall plate with bracing straps embedded down to 600mm; mount 76 x 50mm purlins secured with screws in upright position to trusses at approx. 1000mm intervals;
- **ROOF CLADDING, GUTTERING & GABLE ENDS**  
Radenshield reflective sisalation is stretched across the pitch of the roof & secured with clout nails; Roof sheets - Zincalume 0.47 AZ150 corrugated (24 x 3.6m). Roof - corrugated or IBR treated (chromadeck, colorbond or fibre cement) roof sheets; PVC round or square guttering on 100mm Nutec fascia boards; Self-drilling Topgrip roof screws - 65mm x 12 x 1.0 to secure roof sheets;
- **WINDOWS & DOORS**  
Windows - top-hung pre-manufactured aluminium 1 x 900 x 600 (bathroom); 2 x 900 x 900; 2 x 1200 x 1200; Sliding door - aluminium 1500 x 2100mm; Bathroom single door frame - 813 x 2023mm; 90 x 45mm hardwood; All windows and doors 80mm cement plaster bands; 375mm DPC above windows and doors and below sills; Cramps (galvanised straps) attaching windows and doors every 300mm built into the walls to at least 300mm;
- **CEILINGS, CORNICES & SKIRTING**  
Ceilings: 4 - 6mm Nutec nailed at 300mm intervals to 50mm x 38mm brandering with H PVC joiners; Make provision for maintenance ceiling trap; Aerolite insulation optional; Cornices - standard Nu Doric 75mm; Skirting - treated 70mm pine.
- **ELECTRICAL**  
Lights: 4 ceiling lights (kitchen, bathroom, bedroom, outside veranda); 2 double switches on separate breaker; Plugs: 5 double plugs on separate breaker - 3 kitchen / 2 on opposite sides of living area; DB board - 1 compact. Incoming 4mm electrical 3 core armoured cable to Distribution Board.
- **PLUMBING**  
Piping - 15mm Polycop with Unitwist 15mm connectors; 50mm PVC drain pipe from sink to bathroom & shower trap; includes 1 bathroom basin & mixer tap with pedestal; corner shower with rose & mixer; toilet with 110mm connection; towel rail. Reinforced concrete shower base tiled throughout with 700mm framed corner entry pivot door - 885mm x 885mm x 2m. Optional septic tank if no provision is made for municipal sewerage connection.  
Gas or electrical 150L geyser;
- **KITCHEN**  
Kitchen top with kitchen sink & mixer. Above counter cutlery & crockery rack fixed to the wall.
- **PAINT** - optional colours;
- **OPTIONAL FINISHES**  
Option of electric or gas water geyser; Gas connections to comply with regulations;
- **ENGINEERING**  
Additional cupboards & shelving optional;
- **ENERGY EFFICIENCY**  
SANS 204 Penetration; living area: 23m²; glassed area: 7.5m²; total openings: 4.86m².
- **BUILDING PLAN APPROVALS**  
For owners' account and by own arrangement.

Notes: \_\_\_\_\_  
\_\_\_\_\_  
\_\_\_\_\_

For further information contact:  
André Gauché  
Rondevel Dev Corp  
P O Box 883 Sedgefield S.Cape  
South Africa  
Cell: +27 (82) 4400200  
email: aog@mvweb.co.za  
Web: myolibeach.co.za/bungalow